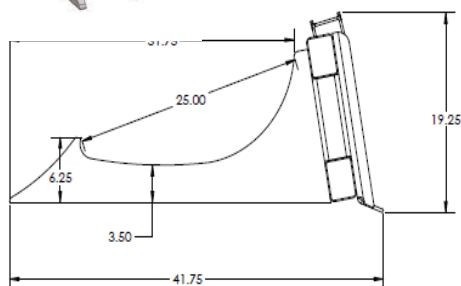
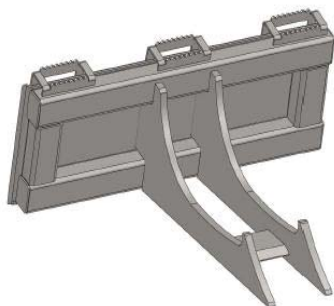


Rock/Stump Digger

Model #33041



1' T-1 Tines



7½" between tines



Dig out large rocks and stumps with ease

Specifications

Overall Width	41.75"
Overall Depth	31.25"
Overall Height	19.25"
Tines	1" T-1 Steel
Mount Plate	5/16" Grade 50
Cutting edge	¾ x 6 1055 Steel
Tubing	3 x 4 x ¼"
Weight	334 lbs.



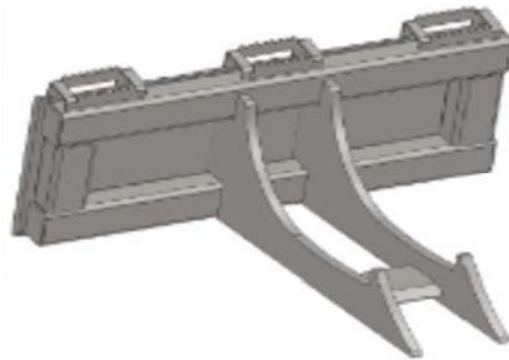
**GENERAL
IMPLEMENT**
DISTRIBUTORS

LEGEND ATTACHMENTS

Our Quality Is “LEGEND” ARY

Skid Steer Rock & Stump Digger

Model #	Description	WT.	List
LA 33041	Rock/Stump Digger USSM	334	1250.00



rock/stump digger